



SHRINKFAST

Innovators In Heat Shrink Tools

Operating, Field Maintenance, and Parts Manual Model 998 UL[®]





SHRINKFAST

Innovators In Heat Shrink Tools

Thank you for choosing Shrinkfast products. Please visit us on the web at www.shrinkfast998.com for our latest product information and updates.

Customer Service Issues:

Before returning any Shrinkfast product, please call:

(800)867-4746 or

(603)863-7719

SAVE THIS MANUAL FOR FUTURE REFERENCE

**GENERAL SAFETY PRECAUTIONS -
READ ALL INSTRUCTIONS
BEFORE OPERATING THIS HEAT TOOL**

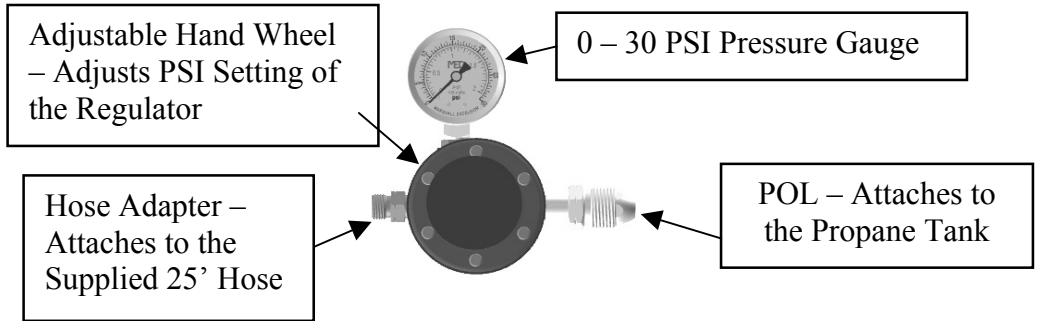
- *Do not operate this heat tool below 15 PSI or damage to the heat tool will occur.*
- Before using any heat tool, check all parts for proper function and damage to component parts including the hose, regulator and heat tool.
- "Hidden areas such as behind walls, ceilings, floors, soffit boards and other panels may contain flammable materials that could be ignited by the heat tool when working in these locations. The ignition of these materials may not be readily apparent and could result in property damage and injury to persons. When working in these locations, keep the heat tool moving in a back and forth motion. Linger or pausing in one spot could ignite the panel or the material behind it."
- Do not use the heat tool to remove paint.
- Do not point this heat tool at anyone and do not operate in an area where there is a risk of an explosion or fire.

GENERAL SAFETY PRECAUTIONS

- When working with any type of heat or open flame, always keep a fire extinguisher close by.
- Always wear safety glasses and gloves (flame retardant or leather is suggested) when shrink wrapping. Never obstruct or cover the air inlet at the back of the heat tool. If the air flow is reduced the heat tool will not work properly.
- When shrink wrapping outdoors, do not shrink wrap when the wind is stronger than 10 mph.
- When shrink wrapping indoors, make sure the work area is well ventilated.
- Keep the work area clear of debris, wood shavings, paper products, flammable chemicals and anything else that may catch fire from the heat of the tool.
- Do not wear loose clothing while shrink wrapping and also keep long hair tied back.
- Stay alert, watch what you are doing, and use common sense when operating the heat tool. Do not use tool while tired or under the influence of drugs, alcohol or medication. A moment of inattention while operating the heat tool may result in serious personal injury.
- Do not overreach. Keep proper footing and balance at all times. Proper footing and balance enables better control of the heat tool in unexpected situations.

- Never operate the heat tool with the combustor nozzle hard up against a surface; this could ignite any material you are shrink wrapping.
- Do not place the combustor nozzle (*where the flame comes out of the heat tool*) next to anything while it is hot. Never allow the combustor nozzle to come in contact with clothing or skin.
- Do not look down the combustor nozzle while the tool is in operation or attached to a fuel source.
- ***The heat tool should be kept 6” – 8” away from the shrink film when in operation. Never keep the heat on one area for more than a few seconds. Once heat is applied to the shrink film, it will continue to shrink even after the heat is moved away from the area.***
- Never modify the tool in any way and use only Shrinkfast replacement parts.
- Never operate in a basement or closed in, non-ventilated area.
- Never operate the heat tool on an area that you cannot see.
- Always operate the heat tool with the UL[®] Guard installed.

REGULATOR OPERATION & MAINTANENCE



Regulator Technical Overview:

- The MEGR-6120 is a high capacity, pounds to pounds, industrial gas regulator. It is designed to conform to UL[®] Standard 144 for use with LP Gas. The maximum supply pressure is 250 PSIG. The maximum output pressure is printed on the regulator nameplate.
- This regulator is not intended for use in pressure applications below 3 PSIG and the heat tool should not be operated at a pressure below 15 PSIG. The operating temperature range is -40 to +200 degrees Fahrenheit.

2. Connect one end of the supplied 25' hose to the hose adapter on the regulator and the other end of the hose to the heat tool. Tighten all fittings with the supplied wrench (*left handed threads, so tighten counter clockwise*).
3. Open the propane tank valve and check for any leaks by spraying a soapy water mixture on the fittings. If any bubbles are visible, shut off the propane tank and tighten the fittings.

Pictured: Hand wheel on top of your supplied propane tank.



To open the flow of propane, turn the tank hand wheel in a counter clockwise motion and watch the regulator gauge increase to the required 22 PSI.

4. When you first turn on the propane tank, the pressure gauge on the regulator will slowly move toward the factory setting of 22 PSIG. Once the hose is fully pressurized, the needle on the gauge will stop at 22 PSIG. Now the heat tool is ready to be fired.

STARTING THE HEAT TOOL

1. Depress the yellow safety that sits in the palm of your hand. If you do not depress the safety first, you will not be able to pull the trigger with your finger tips and ignite the heat tool.
2. With the safety depressed, slowly pull the trigger with your fingertips so you first hear a slight “hissing” of propane flow, then pull the trigger completely and the heat tool will “click” then ignite.
3. Should the gun fail to ignite, release both the safety and trigger fully to ensure that the igniter is reset and repeat the starting procedure.

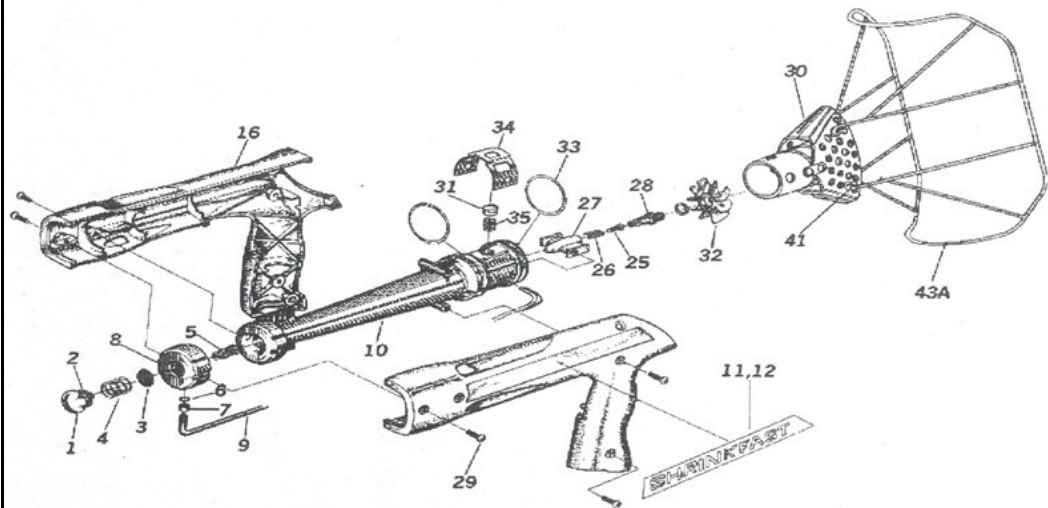


WARNING: MANY NEW USERS PULL THE TRIGGER TOO QUICKLY AND MULTIPLE TIMES BELIEVING THIS IS THE BEST WAY TO IGNITE THE HEAT TOOL. PULLING THE TRIGGER TOO QUICKLY DOES NOT ALLOW THE PIEZO CRYSTAL INSIDE THE IGNITER TO SEND PROPER VOLTAGE TO THE SPARK PLUG, SO PULL THE TRIGGER SLOWLY IN ORDER TO IGNITE EVERY TIME.



WARNING: DO NOT TOUCH THE WIRE METAL SHIELD (UL[®] GUARD) AFTER THE HEAT TOOL HAS BEEN FIRED.

Model 998 Parts Breakdown



4.1 Remove the right housing (15) as shown in operation 3.1



4.2 Undo the 3 mounting screws holding the pump body (10) and remove the pump first by sliding it away from the orifice and then lifting it out. This sequence is important because the orifice reaches inside the pump. Lifting the pump before sliding it away will damage the orifice tubes.

4.3 Unscrew the orifice (5).



4.4 Use a .6mm drill to clean out each orifice stem.



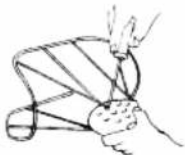
5. UL[®] Safety Guard Assembly



5.1 Push both curved tubular joints onto one half of the guard assembly (43A).



5.2 Insert the second half of the guard into the tubular joints and twist it together until the mounting struts of both halves are parallel.




5.3 Attach the guard assembly to the combustor (30) with the 4 mounting screws (41).

HEAT TOOL SERVICE INSTRUCTIONS

- In the event that your heat tool requires servicing or repair work performed, Shrinkfast and/or your distributor can provide a parts list and assembly diagram as a reference tool only.
- Neither Shrinkfast nor the distributor make any representation or warranty of any kind to the buyer that he or she is qualified to replace any parts of this or any other Shrinkfast product. Shrinkfast and/or your distributor expressly states that all repairs and part replacements should be undertaken by certified and licensed technicians and not by the buyer.
- The buyer assumes all risks and liability arising out of his or her repair to the original product or replacement parts thereto, or arising out of his or her installation of replacement parts.
- If you require any assistance with servicing or repair work, you can contact your local distributor or Shrinkfast direct at 603.863.7719 or via email at info@shrinkfast-998.com
- Shrinkfast provides free estimates on any repair or service request.

DAILY HEAT TOOL INSPECTION

- Before turning on the heat tool, visually inspect the hose for any cracks or breaks that can cause a propane leak.
- When you turn on the gas at the propane tank, make sure the regulator gauge pressurizes to 22 PSI before firing the heat tool and then leak check all fittings and connections.
- If you suspect a leak, use a spray bottle of soapy water and spray directly on each connection to detect any leaks – indicated by bubbles coming from the connection.
- Before firing the heat tool, make sure you do not have a strong smell of propane or hear any “hissing” which would indicate a possible leak inside the heat tool.
- When you are finished using the heat tool (at any time during the day), shut off the propane tank and pull the trigger on the heat tool to purge any remaining gas inside the hose.

 **WARNING: Do not operate the heat tool if the pressure on the gauge drops below 15 PSI. Operating the heat tool below 15 PSI will cause the flame to burn inside the heat tool and damage the internal components voiding the warranty.**

MONTHLY HEAT TOOL MAINTANENCE

- Using compressed air, depress the yellow button and then pull off the combustor (part # 30 in assembly diagram) and clean out any debris inside the combustor assembly.
- Using compressed air, clean out the main body of the heat tool (part # 10).
- Using compressed air, remove the filter holder assembly with a flat blade screwdriver (part # 1, 4, 3) in the back of the heat tool and clean the screen.
- Inspect the o rings (part # 33) inside the combustor for cracks and replace if necessary or apply o ring lubricant.

TROUBLESHOOTING GUIDE

Problem	Probable Cause	Remedy
Gun will not ignite	Safety and/or trigger are not fully depressed.	Depress the safety first, and then pull the trigger to ignite.
	Trigger is pulled to quickly	Squeeze the trigger slowly to ensure the propane has entered the combustor before firing.
	Propane tank pressure too low	Check the regulator to make sure the Gauge is reading a minimum of 15 PSI.
	Propane tank valve is not turned on.	Turn on tank valve and check the regulator gauge for proper pressure setting.
	Defective igniter	<u>With propane turned off and gas purged from the hose</u> , check for spark in the combustor.

Problem	Probable Cause	Remedy
Gun will not ignite	The POL excess check valve has not fully opened.	Turn on propane tank valve and wait 10 seconds or until the needle on the regulator has reached the factory setting of 22 PSI. An audible “click” will be heard when the hose has fully pressurized with gas.
	Clogged orifice	Remove and clean with compressed air.
	Clogged fuel line	Remove and clean with compressed air.
	Clogged pump body	Remove and clean with compressed air.
	Clogged hose assembly	Disconnect and clean with compressed air.
Combustor turns glowing red	Low pressure from tank	Increase pressure from tank or replace tank.
Extremely large flame	Wrong fuel type	Do not use a fork truck tank; only vapor withdrawal tanks like a BBQ tank.
Tank, regulator or hose fittings have iced up.	Low pressure from tank	Increase pressure on regulator or change to a new tank.

TECHNICAL SPECIFICATIONS OUTPUT CHARACTERISTICS

MODEL 998 TECHNICAL SPECIFICATIONS OPERATING PRESSURE of 22 PSIG

Distance / Ft.	Temperature / F	Velocity / Ft./Min.
6"	1120	2100
1'	650	1200
2'	390	660

Heat Capacity	172,500 BTU / Hr.
Propane Consumption	8.0 Lbs. / Hr.
Operating Pressure	22 PSIG
Weight	2 Lbs. 2 Oz.
Air Consumption	30 CFM
Emission	.015 CO/CO2



SHRINKFAST

Innovators In Heat Shrink Tools

SHRINKFAST

460 Sunapee Street

Newport, NH 03773-1488

(800)867-4746 or (603)863-7719