

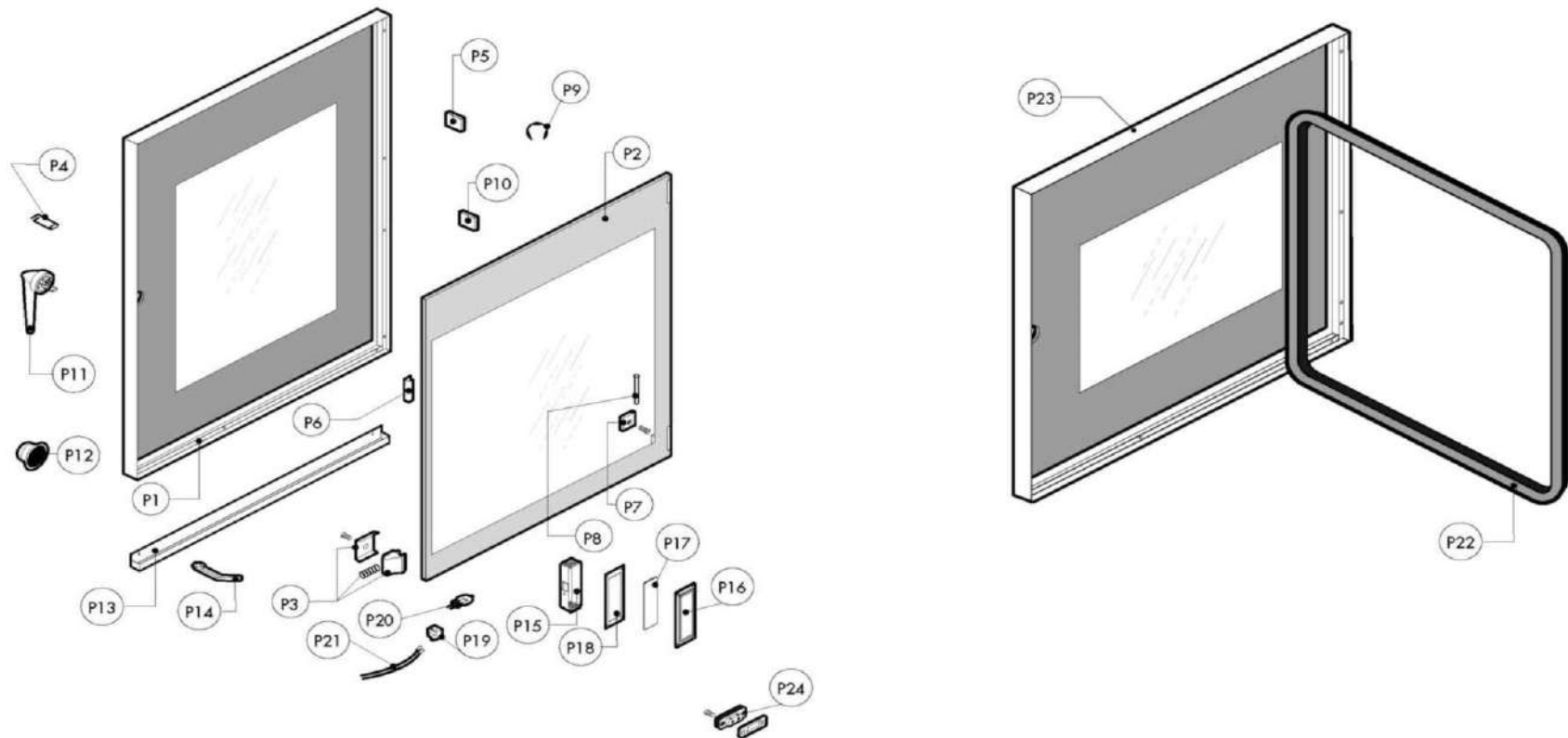
Warning! The exploded views refer to the general model

TAV.A ed.0216

| Pos. | Code | Previous code | Description | Notes | From: | To: | Price () |
|------|-------------|---------------|--|----------------------|-------|-----|-----------|
| 0001 | LA70010370 | LAR70010370 | GASKET [C] | | | | |
| 0002 | LA11207240 | LAR11207240 | LOWER HINGE KIT [C] M-V/061-101-102 2005 | | | | |
| 0003 | LA62280038 | LAR62280038 | CURVE [C] D.50 D.50X | | | | |
| 0004 | LAR69180210 | | DRAIN CONTAINER [C] N/S071-101 2014 | | | | |
| 0005 | LA62070023 | LAR62070023 | BICONE [C] D. 6 | | | | |
| 0006 | LA14402130 | LAR14402130 | HINGE [C] | | | | |
| 0007 | LA65240040 | LAR65240040 | LOCK NUT [C] FOR CONNECTION 107 Z/29 | | | | |
| 0008 | LA58003870 | LAR58003870 | COUNTER FLANGE [C] SMALL | | | | |
| 0009 | LA65140930 | LAR65140930 | CONTACT [C] 1L+1R 3RH2911-1HA11 | | | | |
| 0010 | LA62060223 | LAR62060223 | NUT [C] D. 6 | | | | |
| 0011 | LA58000360 | LAR58000360 | NUT [C] FOR HINGE PIN N/S 2014 | | | | |
| 0012 | LA58004050 | LAR58004050 | NUT [C] FOR HINGE PIN M/106-220 | | | | |
| 0013 | LAR65110340 | | SOLENOID VALVE [C] 230V 50/60HZ 2 WAYS 1P+1D OUT J.G. D10 | | | | |
| 0014 | LAR65110330 | | DOUBLE SOLENOID VALVE 2 WAYS 230V 50/60HZ OUT J.G. D.10 | | | | |
| 0015 | LA61630011 | LAR61630011 | ZINC CLAMP [C] 12-22/9 | | | | |
| 0016 | LAR61630031 | | ZINC CLAMP [C] 40-60/9 | | | | |
| 0017 | LA65280480 | LAR65280480 | FERRITE [C] FT25 | | | | |
| 0018 | LAR65280490 | | FERRITE [C] FT36 | | | | |
| 0019 | LA65280230 | LAR65280230 | FILTER [C] | | | | |
| 0020 | LA69180250 | LAR69180250 | FILTER [C] BASIN DRAINAGE | | | | |
| 0021 | LA58003860 | LAR58003860 | FLANGE [C] | | | | |
| 0022 | LA65450210 | | INDUCTOR [C] 27 mH 8A | | | | |
| 0023 | LAR65140090 | | INVERTER [C] 0,8KW | UL Version (USA-CAN) | | | |
| 0023 | LAR65140890 | | INVERTER [C] 0,8KW | | | | |
| 0024 | LA70020040 | LAR70020040 | GASKET [C] | | | | |
| 0025 | LA70050150 | LAR70050150 | GASKET [C] BOILER CAP | | | | |
| 0026 | LA70010030 | LAR70010030 | GASKET [C] 6,07X1,78 | | | | |
| 0027 | LA70030180 | | GASKET [C] 80X50,3X3 | | | | |
| 0028 | LA70010150 | LAR70010150 | GASKET [C] 55X35X3 | | | | |
| 0029 | LA70010210 | LAR70010210 | GASKET [C] 18,72X2,62 | | | | |
| 0030 | LAR70010050 | | GASKET [C] 7,60X2,62 | | | | |
| 0031 | LAR70060080 | | COUPLING [C] D. 13X18X80 | | | | |
| 0032 | LA70060040 | LAR70060040 | COUPLING [C] D. INT 51 D. EXT 59 | | | | |
| 0033 | LA62030113 | LAR62030113 | COUPLING [C] FF 1/8-1/4 BRASS | | | | |

| Pos. | Code | Previous code | Description | Notes | From: | To: | Price () |
|------|-------------|---------------|--|---------------------------|-------|-----|-----------|
| 0034 | LAR75300020 | | PLATE [C] FAN D.120 | | | | |
| 0035 | LA75300050 | LAR75300050 | PLATE [C] FAN D.270 N/S101 2014 | | | | |
| 0036 | LAR65265100 | | MICROSWITCH [C] | | | | |
| 0038 | LA65160550 | LAR65160550 | SUPPORT [C] | UL Version (USA-CAN) | | | |
| 0038 | LA65160620 | LAR65160620 | HEAT-GUARD [C] 1,4-2,0 | UL Version (USA-CAN) | | | |
| 0038 | LAR65040600 | | MOTOR [C] 220/240V 0,25KW F3 2P | | | | |
| 0038 | LAR65041300 | | MOTOR [C] 230V 50/60HZ 0,25KW UL F3 2P | UL Version (USA-CAN) | | | |
| 0038 | LAR65200400 | | FUSIBILE X MOT. KTK-R-6 600V 6A CL. CC | UL Version (USA-CAN) | | | |
| 0038 | LAR65210110 | | PORTAFUSIBILE BUSMANN BCC3X38 (2306338) | UL Version (USA-CAN) | | | |
| 0039 | LA69010260 | LAR69010260 | PRONG [C] | | | | |
| 0039 | LAR69010270 | | PRONG [C] | | | | |
| 0041 | LA58003140 | LAR58003140 | PIN [C] | | | | |
| 0042 | LAR58003110 | | PIN [C] | | | | |
| 0043 | LA58002670 | LAR58002670 | PIN [C] HINGE SR.2005 | | | | |
| 0044 | LA58000370 | LAR58000370 | PIVOT HINGE | | | | |
| 0045 | LA65210020 | LAR65210020 | FUSE CARRIER [C] 5X20 | | | | |
| 0046 | LAR65240030 | | FAIRLEAD [C] PG 107 Z/29 | | | | |
| 0047 | LAR63070050 | | PRESSURE SWITCH [C] 1/8 0,5-0,35 BAR | | | | |
| 0048 | LAR65095000 | LAR65090220 | MOTOR [C] VENTING | | | | |
| 0049 | LA62090918 | LAR62090918 | CONNECTOR [C] D.10 | | | | |
| 0050 | LAR62090508 | | CONNECTOR [C] | | | | |
| 0051 | LA62090478 | LAR62090478 | CONNECTOR [C] D.10 | | | | |
| 0052 | LA62090528 | LAR62090528 | CONNECTOR [C] 10X10 | | | | |
| 0053 | LA62090633 | LAR62090633 | CONNECTOR [C] 10/10 | | | | |
| 0054 | LA65110500 | LAR65110500 | REGULATOR [C] | | | | |
| 0055 | LA65011940 | LAR65011940 | HEATING ELEMENT [C] 10000W 208V | UL Version 208V (USA-CAN) | | | |
| 0055 | LA65011970 | | RESISTENZA 10000W277V D8.5 INC.CAM.K_081 | UL Version 277V (USA-CAN) | | | |
| 0055 | LAR65011930 | | HEATING ELEMENT [C] 10000W 230V | | | | |
| 0056 | LA58004010 | LAR58004010 | WASHER [C] D. 30/12,5 | | | | |
| 0057 | LAR69180120 | | BOX [C] | | | | |
| 0058 | LAR65320220 | | PROBE [C] K 6X80 1,5ML | | | | |
| 0059 | LAR69180340 | | DOOR [C] | | | | |
| 0060 | LA69150100 | LAR69150100 | CAP [C] | | | | |
| 0061 | LAR58006690 | | CAP [C] SERIE 2014 | | | | |

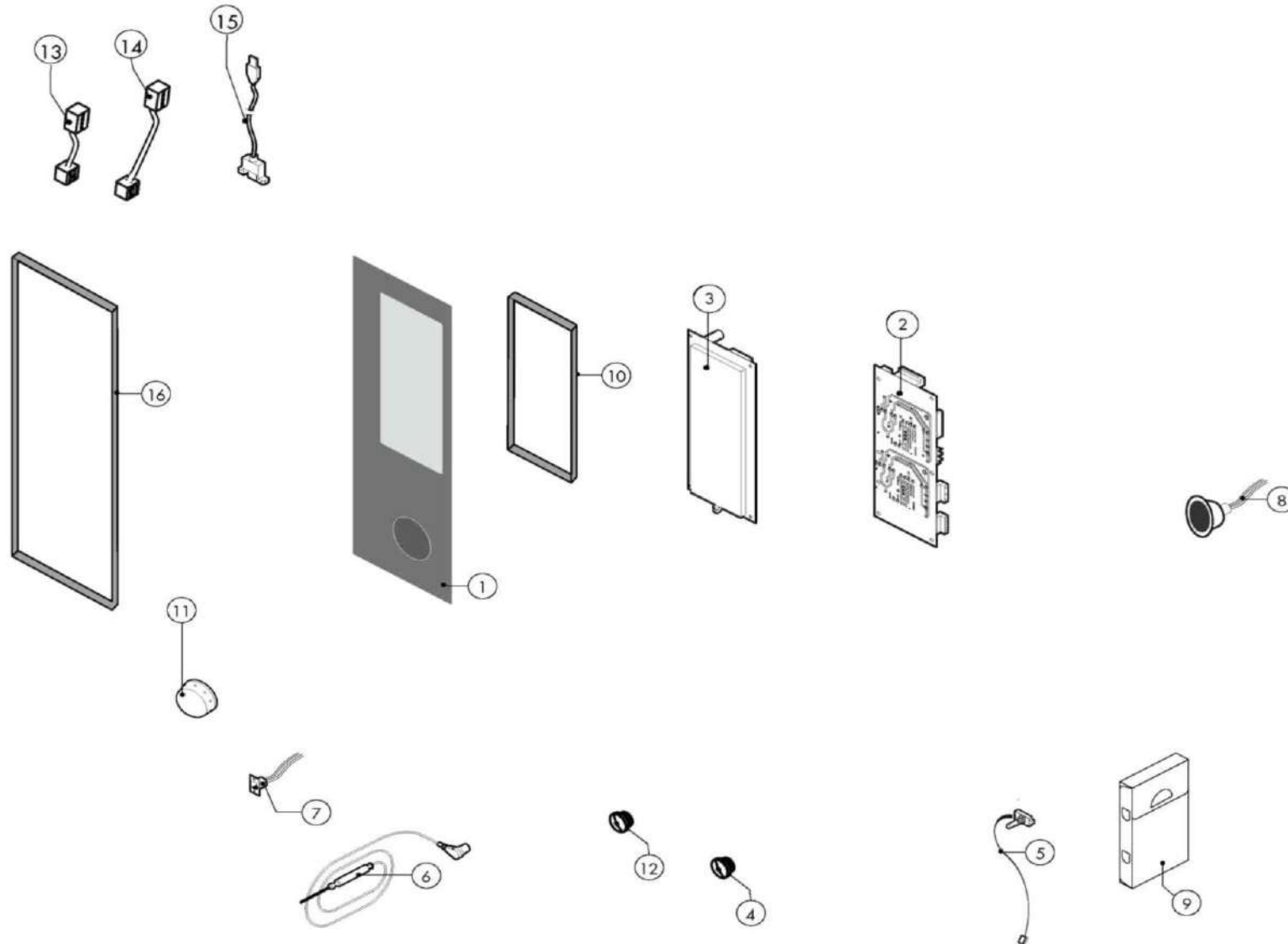
| Pos. | Code | Previous code | Description | Notes | From: | To: | Price () |
|------|-------------|---------------|--------------------------|----------------------|-------|-----|-----------|
| 0062 | LA65140900 | | SWITCH [C] | | | | |
| 0063 | LA65070350 | LAR65070350 | THERMOSTAT [C] 360Å°C | | | | |
| 0063 | LA65070370 | LAR65070370 | THERMOSTAT [C] 360Å°C | UL Version (USA-CAN) | | | |
| 0064 | LA65180420 | LAR65180420 | TRANSFORMER [C] 20VA | | | | |
| 0065 | LA65180430 | LAR65180430 | TRANSFORMER [C] 40VA | | | | |
| 0065 | LA65187110 | LAR65187110 | TRANSFORMER [C] 40VA | UL Version (USA-CAN) | | | |
| 0066 | LA80150000 | LAR80150000 | PIPE [C] | | | | |
| 0067 | LA80150060 | LAR80150060 | PIPE [C] | | | | |
| 0068 | LA58006160 | LAR58006160 | NOZZLE [C] D. 0,80 | | | | |
| 0069 | LA65060050 | LAR65060050 | FAN [R] D. 120 | | | | |
| 0070 | LA75400570 | LAR75400570 | FAN [C] D. 240X80 50HZ | | | | |
| 0071 | LA58004000 | LAR58004000 | SCREW [C] M12X1.5 | | | | |
| 0072 | LA61020562 | LAR61020562 | SCREW [C] M6X55 UNI 5737 | | | | |
| 0073 | LAR61260152 | | VITE | | | | |



Warning! The exploded views refer to the general model

TAV.B ed.0216

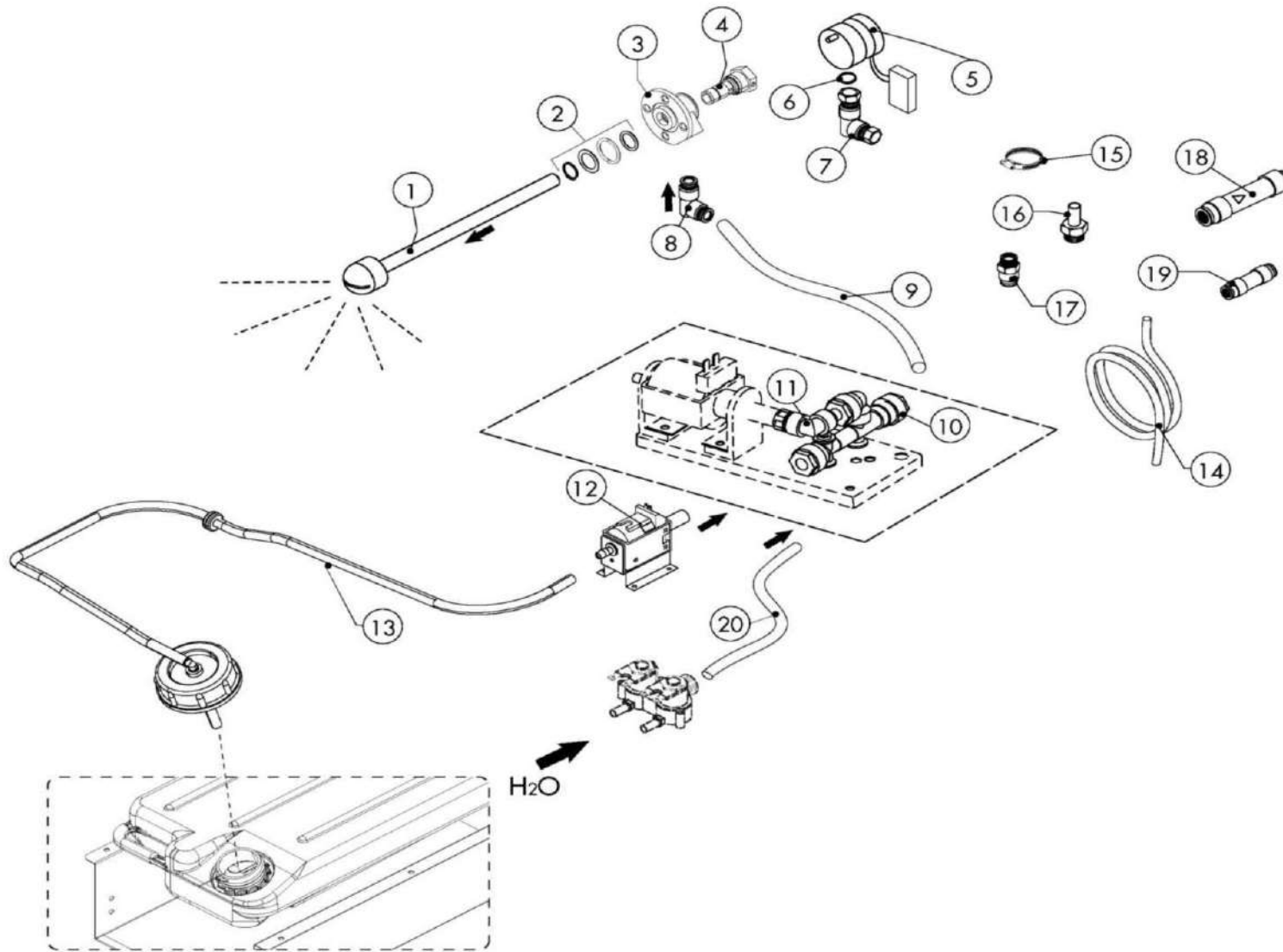
| Pos. | Code | Previous code | Description | Notes | From: | To: | Price () |
|------|--------------|---------------|--|-------|-------|-----|-----------|
| 00P1 | LAR14203660D | | DOOR [C] LEO LB/LV_071 | | | | |
| 00P2 | LAR71202210 | | GLASS PLATE [C] N/S071 2014 494x590x6 | | | | |
| 00P3 | LAR58001780 | | CATCH [C] DOOR P2000 | | | | |
| 00P4 | LA61620132 | LAR61620132 | SPRING [C] | | | | |
| 00P5 | LAR11420660 | | FLANGE [C] | | | | |
| 00P6 | LA11423460 | LAR11423460 | PROTECTION [C] DOOR GLASS K E T 2011 | | | | |
| 00P7 | LA58001760 | LAR58001760 | HINGE [C] GLASS SR2000 | | | | |
| 00P8 | LA58001770 | LAR58001770 | PIN [C] | | | | |
| 00P9 | LA61600031 | LAR61600031 | GASKET [C] D.3,2 UNI 7434 | | | | |
| 0P10 | LAR70050180 | | SPACER [C] GLASS 15x8 M4x12 A2 | | | | |
| 0P11 | LA69010440 | LAR69010440 | LOCK [C] 6303 2011 | | | | |
| 0P12 | LAR69010630 | | COVERING [C] GROUP 6303 | | | | |
| 0P13 | LAR69180220 | | DOOR CONTAINER [C] N/S071-101 2014 | | | | |
| 0P14 | LA69180010 | LAR69180010 | DRAIN [C] | | | | |
| 0P15 | LA11401440 | LAR11401440 | LAMP COVER [C] | | | | |
| 0P16 | LA11401450 | LAR11401450 | FLANGE [C] | | | | |
| 0P17 | LA71500150 | LAR71500150 | GLASS PLATE [C] P2000 | | | | |
| 0P18 | LA70044200 | LAR70044200 | GASKET [C] | | | | |
| 0P19 | LA65270450 | LAR65270450 | LAMP HOLDER [C] | | | | |
| 0P20 | LA65270020 | LAR65270020 | BULB [C] 12V 20W G4 | | | | |
| 0P21 | LA66110310 | LAR66110310 | DOOR LIGHTS CABLE SET [C] M-V/061 | | | | |
| 0P22 | LA70048002 | LAR70048000 | GASKET [C] DOOR T07 2016 | | | | |
| 0P23 | LAR14171660 | | PORTA COMPLETA LEO LB/LV_071 PORTA COMPLETA LEO LB/LV_071 | | | | |
| 0P24 | LAR65260752 | | CONTACT [C] LIGHTS SR.2014 | | | | |



Warning! The exploded views refer to the general model

TAV.C ed.0216

| Pos. | Code | Previous code | Description | Notes | From: | To: | Price () |
|------|-------------|---------------|--|-------|-------|-----|-----------|
| 0002 | LA65302480 | LAR65302480 | POWER BOARD [C] NABOO | | | | |
| 0003 | LA65302701 | | SCHEDA DISPLAY NABOO7+FR.VERT.LEO SOM E | | | | |
| 0004 | LA65321330 | LAR65321330 | CAP [C] N/S 2014 | | | | |
| 0005 | LA65302500 | LAR65302500 | ENCODER [C] PUSH NABOO+CABLE L=60CM | | | | |
| 0006 | LA65321102 | LAR65321100 | PROBE [C] K 4P 6 PIN IMP.2012 | | | | |
| 0007 | LA65321360 | LAR65321360 | CONNECTOR [C] L1000 FEMALE TO CORE PROBE 6 PINS | | | | |
| 0008 | LA65330060 | LAR65330060 | LOUDSPEAKER [C] CONTROL PANEL NA 2014 | | | | |
| 0009 | LAR86020400 | | VALIGETTA X SONDA AL CUORE TRASPARENTE | | | | |
| 0010 | LAR70040040 | | GASKET [C] CONTROL PANEL T 2015 | | | | |
| 0011 | LA69030250 | LAR69030250 | KNOB [C] ENCODER D.60 | | | | |
| 0011 | LA69030370 | LAR69030370 | MANOPOLA ENCODER D.60 | | | | |
| 0012 | LA65321310 | LAR65321310 | CAP [C] | | | | |
| 0013 | LA65301740 | LAR65301740 | CABLE [C] SERIAL WITH PLUG RJ45 L=250 | | | | |
| 0014 | LA65301750 | LAR65301750 | CABLE [C] SERIAL WITH PLUG RJ45 L=600 | | | | |
| 0015 | LA65302600 | LAR65302600 | CABLE [C] CARD SWITCH CONNECTION USB 90° L=850 | | | | |
| 0016 | LAR80100100 | | PROFILE [C] | | | | |



Warning! The exploded views refer to the general model

TAV.D ed.0216

| Pos. | Code | Previous code | Description | Notes | From: | To: | Price () |
|------|-------------|---------------|--|-------|-------|-----|-----------|
| 0001 | LAR58007420 | LAR58007040 | WASHING HEAD [C] L=115(071/T07) | | | | |
| 0002 | LAR70045120 | | GASKET [C] | | | | |
| 0003 | LAR58007020 | | FLANGE [C] | | | | |
| 0004 | LAR58007000 | | PIN [C] | | | | |
| 0005 | LA65090260 | LAR65090260 | GEARMOTOR [C] | | | | |
| 0006 | LA70010080 | LAR70010080 | GASKET [C] OR 14x2 VITON DIN 981 | | | | |
| 0007 | LA62090633 | LAR62090633 | CONNECTOR [C] 10/10 | | | | |
| 0008 | LA62090663 | LAR62090663 | CONNECTOR [C] 10X1/4 | | | | |
| 0009 | LA80150000 | LAR80150000 | PIPE [C] | | | | |
| 0010 | LA62090888 | LAR62090888 | MANIFOLD [C] 3WAYS-2D.10+1D.8+3 NO RETURN CONTROL | | | | |
| 0011 | LA62090498 | LAR62090498 | CONNECTOR [C] D.8 | | | | |
| 0012 | LAR65110600 | | PUMP [C] | | | | |
| 0013 | LAR14171800 | | PIPE [C] | | | | |
| 0014 | LA80150040 | LAR70070080 | PIPE [C] | | | | |
| 0015 | LA61630121 | LAR61630121 | ZINC CLAMP [C] WITH SPRING D.13,7MM | | | | |
| 0016 | LA62090518 | LAR62090518 | CONNECTOR [C] 10X1/4 | | | | |
| 0017 | LAR62090508 | | CONNECTOR [C] | | | | |
| 0018 | LA65110690 | LAR65110690 | CONNECTOR [C] 3/4F+JG10 | | | | |
| 0019 | LA62090878 | LAR62090878 | CONNECTOR [C] D.8 | | | | |
| 0020 | LA80120060 | LAR80120060 | PIPE [C] | | | | |

